

Frequently Asked Questions

What are passing scores for the approved TSI Assessment?

Section	Score	Placement
Math	350	College Level
Reading	351	College Level
Writing (Multiple Choice)	363 – Must also have 4 on Essay	College Level
Writing (Essay)	5	

What if a student doesn't pass the approved TSI Assessment?

If one or more of the sections of the TSI Assessment are not passed, the student must be enrolled in either a course based or non-course based developmental class in the subject area(s) that were not passed. Students may retest to drop their developmental course at any time before or during the semester.

To take your Pre-Assessment Activity (PAA), login to BlackBoard Learn at:

<http://learn.utsa.edu>

Once the PAA is completed, admitted UTSA students may register for the TSI Assessment at:

<http://asap.utsa.edu>



Main Campus
Multidisciplinary Studies 1.01.04
210-458-4125

Downtown Campus
Buena Vista 1.302
210-458-2941

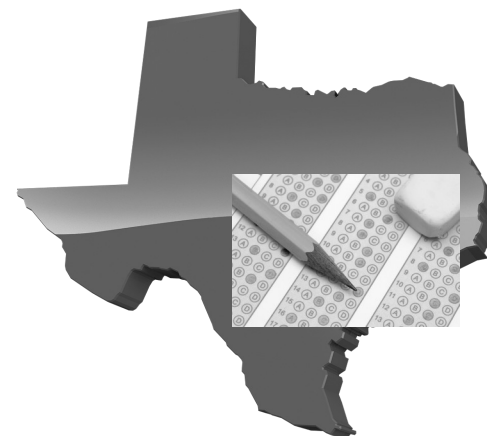
UTSA Testing Services
One UTSA Circle
San Antonio, TX 78249

www.utsa.edu/testing

UTSA Testing Services

Texas Success Initiative (TSI)

Preparing students to register for classes at Orientation.



University of Texas
at San Antonio
Main: MS 1.01.04
210-458-4125

Downtown: BV 1.302
210-458-2941

www.utsa.edu/testing

What is TSI?

The Texas Success Initiative (TSI) requires state institutions of higher education to assess the academic skills (Reading, Writing and Math) of each entering undergraduate student to determine if they are able to register for college level courses or must take remedial courses first. A student can be exempt from the TSI Assessment based on ACT, SAT or TAKS scores. **Score exemption requirements are higher than admissions requirements.** If a student does not meet an exemption, they must take the approved TSI Assessment and have scores in the university's system before any class registration is possible.

Approved TSI Exams:

TSI Assessment

If taking the TSI Assessment at UTSA, students are required by Texas State Law to take a

Pre-Assessment Activity (PAA)
PRIOR to TSI Assessment registration.

The PAA may be accessed online through your Blackboard Learn account.

TSI Test Exemptions

ACT Full Exemption: Composite of 23 with 19 in both English and Math content areas.

ACT Partial Exemption: Composite of 23 with 19 in English **or** Math content areas.

Students not exempt in one or both content areas **must** take a TSI exam in the area(s) they are deficient in. English content area covers both Reading and Writing sections of TSI. Scores Valid for 5 years.

SAT Full Exemption: Composite score of 1070 (Critical Reading and Mathematics) with a 500 on both the Critical Reading **and** Mathematics content areas.

SAT Partial Exemption- Composite score of 1070 (Critical Reading and Mathematics) with a 500 on Critical Reading **or** Mathematics content areas.

Students not exempt in one or both areas **must** take a TSI exam in the other area(s). Critical Reading content covers TSI areas of Reading and Writing. Scores valid for 5 years.

TAKS-exit level Full: 2200 English/Language Arts (ELA) **with** a writing subscore of at least a 3 and a 2200 Mathematics.

TAKS Partial: 2200 English/Language Arts (ELA) **with** a writing subscore of at least a 3 or a 2200 Mathematics.

ELA **with** writing subscore covers TSI areas of Reading and Writing. Scores valid for 5 years.

* **TSI Exemption Composite scores do NOT include the Writing section. ACT Composite is a combined English and Mathematics section and the SAT Composite is a combined Critical Reading and Mathematics section only.**

TSI General Exemptions

General exemptions hold for students who have:

- * Graduated with an associates or baccalaureate degree from a Texas Public Institution of higher education.
- * Transferred to UTSA from a private, independent or an accredited out-of-state institution of higher education and who has satisfactorily completed college-level course work as determined by this institution.
- * Previously attended any Texas public institution of higher education and has been determined to have met readiness standards at that institution.
- * Currently serving active duty as a member of the armed forces of the United States, the Texas National Guard, or as a member of a reserve component for at least a 3 year period preceding enrollment.
- * Been, on or after August 1, 1990, Honorably Discharged, retired or released from active duty as a member of the armed forces of the United States, or the Texas National Guard or served as a member of a reserve component of the armed forces of the United States.
- * Been admitted as non-degree seeking.